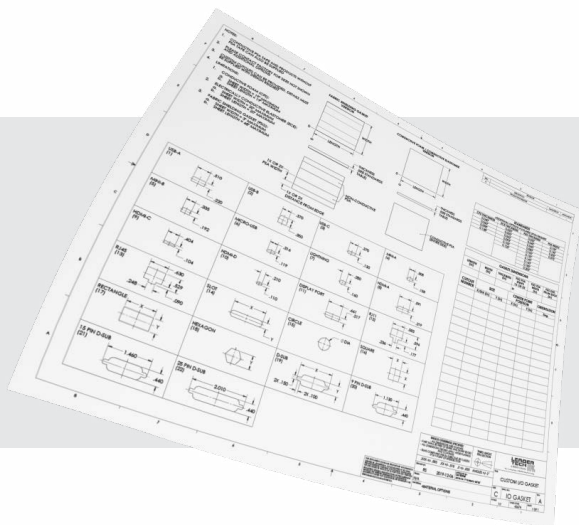


## I/O (Input/Output) Gaskets

EMI gaskets are used on electronic enclosures by connecting two opposing metallic planes, making them appear as one continuous surface applications. Leader Tech offers a variety of I/O gasket cutout options that adapt to an era of increasing diversity of electronic devices. Materials for the gaskets include conductive elastomers, fabric shielding gaskets and conductive foam, which provide excellent conductivity and shielding effectiveness. Each material provides specific benefits; environmental sealing for elastomers, low cost for fabric shielding gaskets and low compression force for conductive fabric shielding. Several manufacturing methods are offered in order to ensure that the most cost-effective method is utilized to produce your gaskets. For more information about each of the materials above, please refer to their respective catalogs.

**Eliminates gap problem between connector and I/O surface.**



Over 20 standard cut-outs (USB, RJ, HTML, D-Subs, Display port, etc.). Custom cut-outs also available.

## Applications

- Modems
- Switches
- Computers
- Monitors
- Telecommunication

## Performance

- Typical Performance  
Shielding Effectiveness  
80 - 115dB
- Frequency Range  
20Mhz - 10GHz
- Recommended Compression:
  - o Conductive Foam and Fabric Shielding Gasket:  
30-50% of gasket height
  - o Conductive Elastomer:  
5-10% of gasket height

## Materials

- Conductive foam shielding (CFS): Ni/C Polyester fabric over Ni/C PU foam
- Fabric Shielding Gasket (FSG): Metalized Cu/Ni Ripstop fabric over PU foam core
- Electrically conductive elastomer (ECE): See conductive elastomer catalog page 4

## Availability

- 1- 3 weeks



**INPUT/OUTPUT  
GASKETS**

[www.LeaderTechInc.com](http://www.LeaderTechInc.com)